

**59E59 THEATERS**

**Relaxed Performance**

**Visual Narrative**

## **Cassie and the Lights**



**59E59 Theaters**

**59 East 59<sup>th</sup> Street**

**New York, NY 10022**

**June 24<sup>th</sup>, 2023 at 2:15pm**

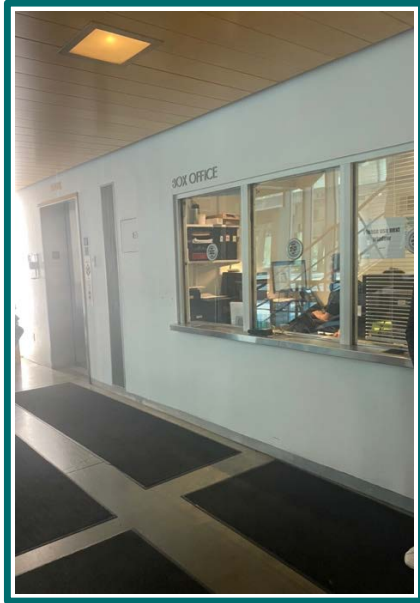


I will go to **59E59 Theaters** to see **Cassie and the Lights!**

The theater is located at **59 East 59th Street, New York, NY, 10022**

The show begins at **2:15pm** on **Saturday June 24<sup>th</sup>, 2023.**

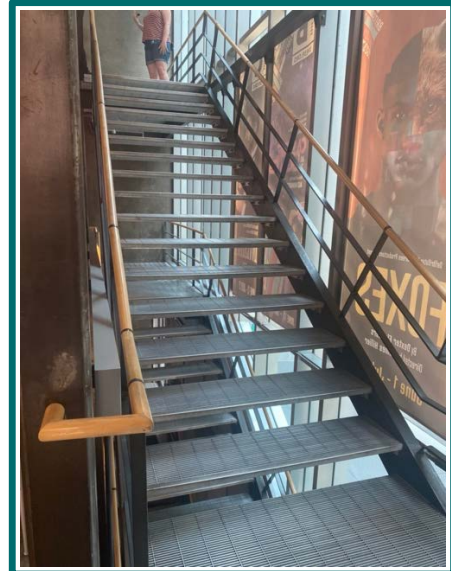
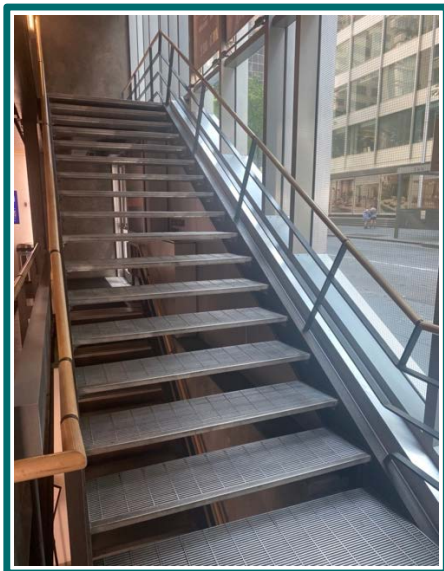




On my way in, I will pass the box office.

Sometimes tickets may be purchased and/or picked up at the box office.

Then, I will take an elevator or go up some stairs to the 3<sup>rd</sup> level.





I will pass through a hallway on the way to Theater B.

Ushers will direct me to where I need to be.

I will pass a bathroom on the way into the theater. I may use the bathroom on the way to my seat or at any point during the show.



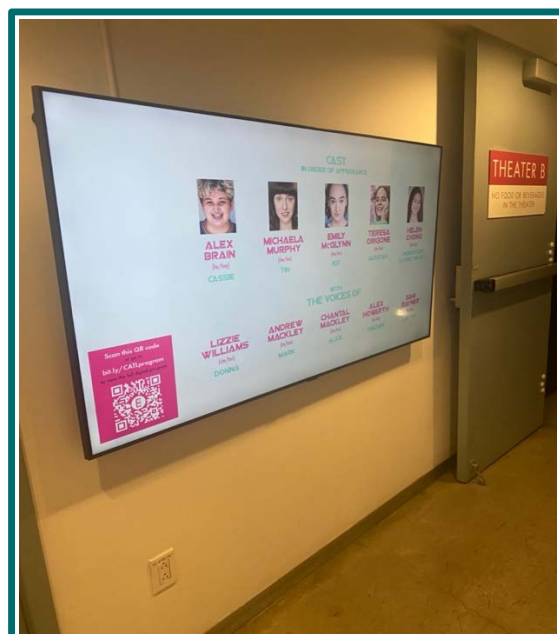




An usher will scan my ticket on the way into the theater.

I will pass screens with pictures of the performers as well as images from the show on the way into the theatre.

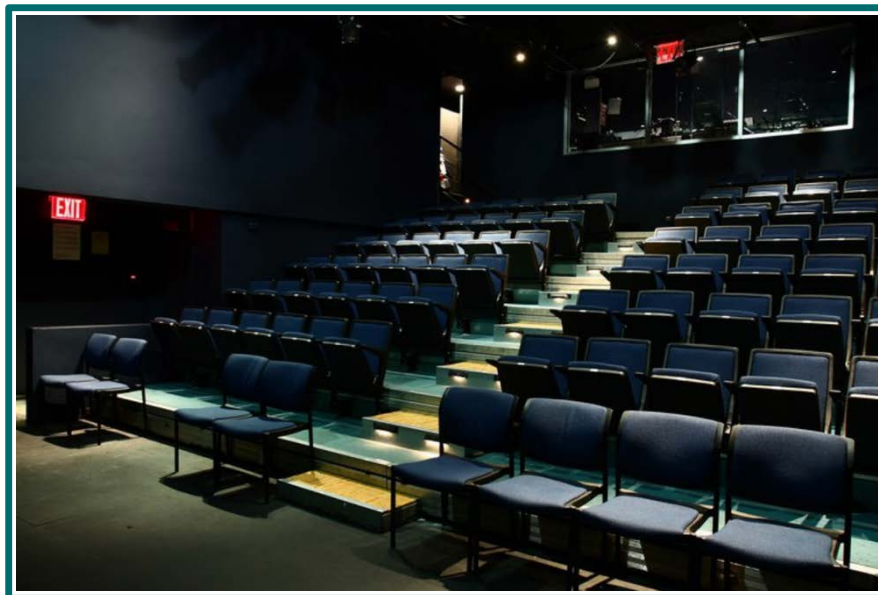
Ushers will direct me to where I need to be.



An usher will direct me to Theater B.

An usher will give me a show program, which has information about the performance.

I will give my ticket to the usher so they can show me where my seat is.  
The numbers on the ticket let me know where my specific seat is.





The performers may speak to some people in the audience before the show begins.

Performers will NOT touch anyone in the audience.

The theater will become darker and quieter so the audience can experience the show.

The actors wear costumes when performing. This helps them pretend to be the characters they are portraying.

# Characters

**Cassie**



**Tin**



**Kit**



This show is about three sisters, Cassie, Tin, and Kit, who are sisters in foster care.

## Musician



The musician sings and plays the keyboard during the performance.





The audience may clap during and at the end of the performance to let the performers know that the audience likes their performance.

If the show is ever too loud or too bright, I may take a break right outside the theater space.

When I am ready, I may go back into the theater to experience the show.

There will NOT be an intermission, a break during the show.

**I may take a break during the show...**



When the performance has finished, the audience will leave the theatre.

**Thank you for joining us!**



Relaxed Performance of *Cassie and the Lights* at 59E59 Theaters

Resource Material Author: Becca Yuré, Ph.D., BCBA, LBA, By Your Side Services