

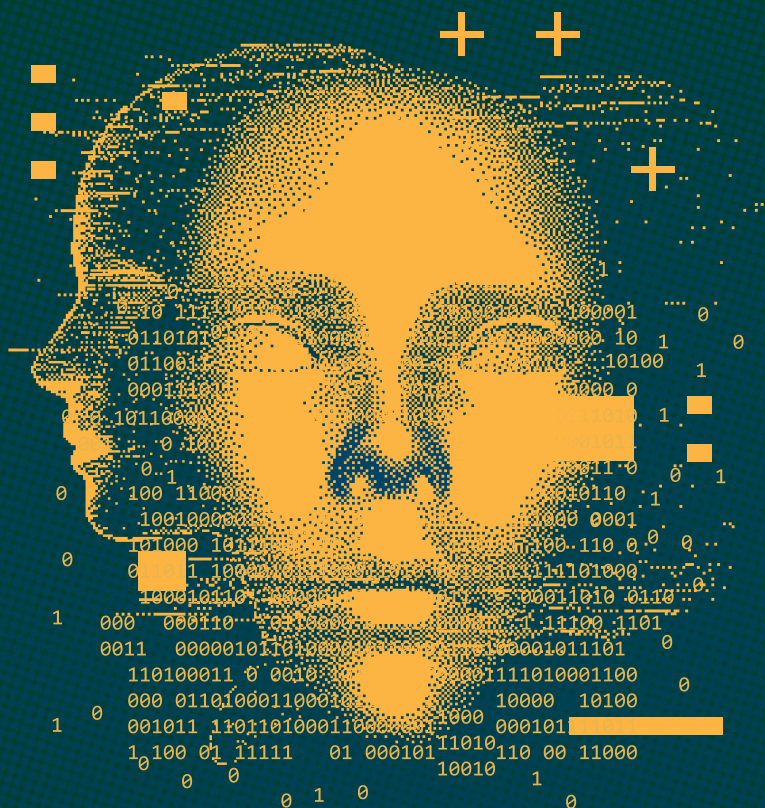
PRIMARY STAGES
AT 59E59 THEATERS

ARTISTIC DIRECTOR
ANDREW LEYNSE

EXECUTIVE DIRECTOR
SHANE D. HUDSON

FOUNDER
CASEY CHILDS

PRESENTS



NEW GOLDEN AGE

BY KAREN HARTMAN

DIRECTED BY

JADE KING CARROLL



THEATER B

APRIL 28 – JUNE 9

PART OF



WELCOME TO NEW GOLDEN AGE!

Welcome back. After two long years, we're so glad to have you here for Primary Stages' return to live theater. Whether this is your first show with us or your twentieth, we welcome you as a member of the Primary Stages family. Since our founding in 1984, we have dedicated ourselves to inspiring, supporting, producing, and sharing the art of playwriting. We operate on the strongly held belief that the future of American theater relies on nurturing playwrights and giving them the support they need to fully realize their vision. Now, we are thrilled to return to 59E59 Theaters as the Off Broadway Company in Residence as part of the inaugural VOLT Festival. This festival is truly unique in its scope, with three theater companies celebrating the work of a single playwright, filling three spaces. With her tremendous body of work, we can't think of a better playwright to raise up than Karen Hartman, and we are honored to present her world premiere production of *New Golden Age*.

We first encountered *New Golden Age* in a play reading over Zoom. We were immediately struck by the surrealistic and frighteningly possible world that Karen had created for this modern day Antigone tale. While drawing on the age-old story of the individual versus institutional power, Karen's play felt both prescient and prophetic. We were then lucky enough to develop the play in person over two weeks at the Colorado New Play Festival and then over a Zoom reading as Omicron surged in January 2022. This play was truly born of the pandemic, and carries all our anxieties, hopes, and lessons from the past two years.

We've always known that it takes a village to create a piece of theater, and we are immensely grateful to the community that has brought this work to fruition, including you, the audience. It is truly special to be able to gather in a space and experience a play in communion with others. You being here is what makes theater and we couldn't do it without you.

Thank you for making Primary Stages your Off Broadway home.



Andrew

ANDREW LEYNSE

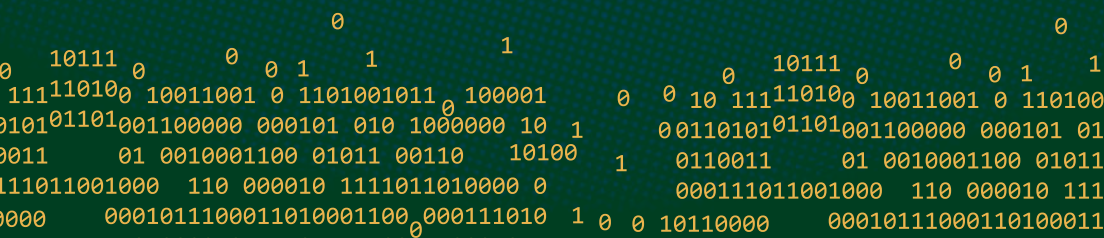
Artistic Director



Shane

SHANE D. HUDSON

Executive Director





ARTISTIC DIRECTOR
ANDREW LEYNSE

EXECUTIVE DIRECTOR
SHANE D. HUDSON

FOUNDER
CASEY CHILDS

PRESENTS

NEW GOLDEN AGE

BY KAREN HARTMAN

DIRECTED BY
JADE KING CARROLL

Time: Soon

CAST

JACE..... CARMEN CASTILLO
SILAS..... RICARDY FABRE
MAT..... DOUG HARRIS
LIN..... MAHIRA KAKKAR
POLLY..... CLAIRE SIEBERS

PRODUCTION STAGE MANAGER..... DENISE CARDARELLI
ASSISTANT STAGE MANAGER..... OLIVIA TYMON

SCENIC DESIGN..... LEE SAVAGE
COSTUME DESIGN..... JEN CAPRIO
LIGHTING DESIGN..... ANSHUMAN BHATIA
SOUND DESIGN..... FAN ZHANG
WIG AND MAKEUP DESIGN..... J. JARED JANAS
FIGHT COORDINATOR..... ALEX MIGHT
CASTING..... STEPHANIE KLAPPER CASTING
GENERAL PRESS REPRESENTATIVE..... MATT ROSS PUBLIC RELATIONS

PRODUCTION

COVID SAFETY MANAGER..... TAMEISHIA PETERSON
PROPS DESIGNER..... CARRIE MOSSMAN
ASSISTANT SCENIC DESIGNER..... MICHAEL RUIZ-DEL-VIZO
ASSOCIATE WIG & MAKEUP DESIGNER..... TONY LAURO
ASSISTANT COSTUME DESIGNER..... HEATHER NIEL
ASSISTANT LIGHTING DESIGNER..... JUSTIN BEETS
ASSISTANT SOUND DESIGNER..... EAMON GOODMAN
PRODUCTION ELECTRICIAN..... DAN MULLINS
LIGHTING PROGRAMMER..... JEFFREY D'AMBROSIO
PRODUCTION AUDIO..... CLEM GOODMAN
WARDROBE SUPERVISOR..... HILARY SHEILDS
LIGHT & SOUND BOARD OPERATOR..... JEFFREY D'AMBROSIO
DIRECTING INTERN/DRAMATURG..... HANNAH SANZA

Run time: 1 hour 30 minutes, with no intermission

This Primary Stages production is supported, in part, by public funds from the New York City Department of Cultural Affairs in partnership with the City Council.

New Golden Age was developed with support from SPACE on Ryder Farm, the Keen Company Writers Lab, the Colorado New Play Festival, and a Guggenheim Fellowship.

Lin's scholarly theories are partially derived from the writings of Lina Khan and Shoshanna Zuboff. All other aspects of the play are fictitious.

VOLT

An unprecedented festival of three NYC premieres authored by one writer presented in all three spaces, simultaneously. For the inaugural Festival, we selected playwright Karen Hartman. We are thrilled to share her storytelling with you.

KAREN HARTMAN

(Playwright)



Hartman's work launches VOLT, an unprecedented festival of three Off Broadway premieres by a single author simultaneously. Earlier this year, Denver Theater Center presented the world premiere musical *Rattlesnake Kate*, book by Hartman, score by Neyla Pekarek. *Good Faith: Four Chats about Race and the New Haven Fire Department* premiered at Yale Repertory Theater. *Roz and Ray* (McKnight Fellowship, Edgerton New Play Prize) premiered at Seattle Rep and Victory Gardens. New York credits include *Leah's Train* (NAATCO), *Gum* (WP Theater), and *Girl Under Grain* (Best Drama, NY Fringe). Hartman is developing *Project Dawn* (People's Light, NNPN Rolling World Premiere) for Population Media Center as a television series. *Alice Bliss* (book: Hartman, music: Jenny Giering, lyrics: Adam Gwon, based on Laura Harrington's novel) won the 2019 Weston-Ghostlight New Musical Award. Her prose has appeared in the *New York Times* and the *Washington Post*. A recent Guggenheim Fellow and former Fulbright Scholar, Hodder Fellow, and New Dramatist, Hartman lives in Brooklyn with her family.

DOUGLAS DENOFF PRESENTS
THE DIRECTORS COMPANY'S PRODUCTION OF

THE LUCKY STAR

THEATER A / APRIL 26 - JUNE 12

PRIMARY STAGES PRESENTS

NEW GOLDEN AGE

THEATER B / APRIL 28 - JUNE 9

MARY J. DAVIS AND MBL PRODUCTIONS PRESENT

GOLDIE, MAX & MILK

THEATER C / MAY 1 - JUNE 4

WHO'S WHO

CARMEN CASTILLO

(Jace)



New York Debut! National Tour: **Once** (Apex Touring). Regional: **The OK Trenton Project** (Passage), Nick Blaemire's **Soon** (11th Hour, Prima), **Once** (Arden, Olney). Many thanks to Brian at Hell's Kitchen Agency, to mom, and to the dolls of NYC! Instagram [@carmenesperanza_](#)

RICARDY FABRE

(Silas)



Ricardy Fabre is making his Primary Stages debut. Originally from New York and recent graduate of Brown/Trinity Rep MFA Acting. Select Credits: **Lessons in Survival** (Vineyard Theater), **The Christians** (Chautauqua), **Stick Fly** (St. Louis Rep), **Our Town** (Portland Center Stage), **A Raisin in the Sun** (Seattle Rep), **I and You** (People's Light).

DOUG HARRIS

(Mat)



NYC: Playwrights Realm, Drama League, Masterworks Theater Co., Project: Theater. Regional Theater: George St. Playhouse, Barrington Stage, Pittsburgh Public, B St. Theatre, Actors Theatre of Louisville, Humana Festival. Film: **Spooky Action** (upcoming); **December 1, 1969**; **Day One**, **The Wait**, **Viking Funeral**.

www.dougharrisactor.com

MAHIRA KAKKAR

(Lin)



Mahira Kakkar is a multilingual actress and writer. Select stage credits include the premiere of **Monsoon Wedding** with Mira Nair, **Clive** with Ethan Hawke, **Ms. Witherspoon** with Christopher Durang, and **Jesus in India** with Lloyd Suh. Most recently, she appeared as a lead in **A Suitable Boy** (BBC, Netflix India) and a recurring role on **Manifest** (NBC, US).

Additional TV credits: **New Amsterdam**, **Law and Order: CI**, **Odd Mom Out**, **Orange is the New Black**, and others. Film work includes **Hank and Asha** (Slamdance Audience Favorite, Napa Valley Film Festival Best Actress), **Hechki**, and **Bite Me**. Upcoming: **Bodies They Ritual** (Clubbed Thumb). Artistic Advisory- Rattlestick. Education: Jadavpur University, Juilliard.

CLAIRE SIEBERS

(Polly)



Select Theater: **Georgia Mertching is Dead** (EST), **Agnes** (Lesser America), **Nylon** (TheaterLab), **The Workshop** (softFocus), **Pocatello** (Williamstown), and projects with Actors Theatre of Louisville, Clubbed Thumb, The New Group, and Lincoln Center. Television: **Gossip Girl**, **The Blacklist**. Claire is co-founder of Jughead Films, whose projects include **Genius in a Small Town**, **Power Lunch: the Web Series**, and **Conference**. Education: Yale, Juilliard. New Georges Affiliated Artist.

JADE KING CARROLL

(Director)

Seven Deadly Sins – Wrath by Dael Orlandersmith (Miami New Drama, Drama League Award), *New Age* (Milwaukee Rep), *Proof of Love* (Audible/NYTW), *Hello, from the Children of Planet Earth* (Playwright's Realm), *Detroit '67* (McCarter Theatre co-production with Hartford Stage); *Intimate Apparel*, *The Piano Lesson* (McCarter Theatre); *The Piano Lesson* (Hartford Stage), *Having Our Say* (Hartford Stage co-production with Long Wharf Theatre), *Autumn's Harvest* (Lincoln Center Institute), *Trouble in Mind* (Two River Theater & Playmaker's Rep); *Ma Rainey's Black Bottom*, *The Whipping Man*, *Native Gardens*, *Skeleton Crew*, *Bad Dates*, *Perseverance* (Portland Stage); *The Revolutionists*, *Sunset Baby* (City Theatre); *A Raisin In The Sun* (Juilliard & Perseverance), *The Tempest* (Chatauqua Theater Company); *Seven Guitars*, *The Persians* (People's Light and Theatre); *King Hedley II* (Portland Playhouse), *Cardboard Piano* (Juilliard); *Laughing Wild*, *Redeemed*, *Skeleton Crew* (Dorset Theatre Festival).

LEE SAVAGE

(Scenic Designer)

Broadway: *The Lightning Thief*. NYC: Women's Project, Second Stage Uptown, Keen Company, Acting Company, Mabou Mines, LAByrinth, LCT3, Roundabout Underground, Page 73, Atlantic, NAATCO, Clubbed Thumb, EST, and NY Fringe. Regional: ACT, Asolo Rep, Baltimore Centerstage, Glimmerglass, Goodman, Guthrie, Huntington, Long Wharf, Old Globe, Shakespeare Theatre, Signature, Trinity Rep, Washington National Opera, Wilma, and Yale Rep, among others. AWARDS: Helen Hayes, NAACP, and Connecticut Critics Circle. Affiliations: Wingspace and USA829. MFA: Yale School of Drama, BFA: RISD, Head of Scenic Design at Rutgers.

JEN CAPRIO

(Costume Designer)

Broadway: *Falsettos*, *The 25th Annual Putnam County Spelling Bee*. National/International: *Falsettos*, *Joseph...*, *The Lion* (West End/US Tour); *Rockumentary* and *Kaleidoscope* (Celebrity Cruise Lines). Over 150 LORT, NYC, and Opera productions. TV: *Sesame Street* (seasons 47-53), *The Not-Too-Late Show with Elmo* (Seasons 1-2), 2020 Daytime Emmy Winner: *Sesame Street*.

www.jencaprio.com

ANSHUMAN BHATIA

(Lighting Design)

Anshuman's designs for opera, theater, and dance have been seen at Santa Fe Opera, Beijing's NCPA, Dublin's Civic Theater, The McKittrick Hotel, The Public, The Atlantic, Arena Stage, The Park Avenue Armory, The Juilliard School, Kentucky Opera, Lyric Opera of Kansas City, and Opera Omaha. MFA: NYU.

www.bhatiadesign.com

FAN ZHANG

(Sound Designer)

Recent Off Broadway credits: *At the Wedding* (Lincoln Center Theatre), *Paris* (Atlantic Theatre), *Our Dear Dead Drug Lord* (Second Stage), *Pumpgirl* (Irish Rep), *Suicide Forest* (A.R.T.), *Molly Sweeney* (Theatre Row), *Behind the Sheet* (Ensemble Studio). Regional: *The Great Leap* (Portland Center Stage), *White Noise* (Studio Theatre, DC), *Redeem* (Cincinnati Ballet), *Revolutionist* (Pittsburgh City Theatre). Training: MFA, Yale School of Drama.

J. JARED JANAS

(Wig, Hair, and Makeup Design)

Broadway: *American Buffalo*, *Jagged Little Pill*, *Frankie and Johnny in the Claire de Lune*, *Gettin' the Band Back Together*, *Bandstand*, *Indecent*, *Sunset Boulevard*, *The Visit*, *The Real Thing*, *Lady Day at Emerson's Bar & Grill*, *Motown*, *Peter and the Starcatcher*, *The Gershwins' Porgy and Bess*, and *All About Me*.

CARRIE MOSSMAN

(Props Designer)

Carrie's previous prop designs include *Pride & Prejudice*, *Discord*, *The Roads To Home*, *Fade*, and *A Perfect Arrangement* (Primary Stages); *Proof of Love*, *The Way She Spoke*, and *Half-Life of Marie Curie* (Audible Theatre); *Cry It Out* and *Airness* (ATL); *Out of the Mouths of Babes* and *The Traveling Lady* (Cherry Lane Theatre); *The Effect* (Barrow St.), *Lost Girls* (MCC); *Assassins*, *Hamlet*, and *Faustus* (CSC).

ALEX MIGHT

(Fight Coordinator)

Alex is an actor and movement director from central Ohio. Regional and International: *The Wolves* (Actors Theatre of Louisville), *Are You There?* (Humana Festival), *Elegies...* (King's Head Theatre). Off Broadway: *Kin* (Women's Project), *Pop Punk High* (The PIT). Broadway: *POTUS*. BFA: NYU Tisch.

www.alexmight.com

DENISE CARDARELLI

(Production Stage Manager)

Off Broadway: Manhattan Theatre Club, Urban Stages, and The Playwright's Realm. New York: Lincoln Center Education, HERE Arts Center, LAByrnth Theater Company, and The Talking Band. Selected Regional: Hartford Stage, Long Wharf Theatre, Two River Theater, The Cincinnati Playhouse in the Park, Centerstage (Baltimore), Olney Theatre Center, and The Shakespeare Theatre of New Jersey.

OLIVIA TYMON

(Assistant Stage Manager)

Olivia is so happy to be back at Primary Stages for this new work! Previous involvement with Primary Stages includes her Off Broadway debut on Leah Nanako Winkler's *God Said This*. Olivia would like to thank the wonderful people that she gets to work with and her supportive family.

STEPHANIE KLAPPER

(Casting Director)

SKC's award-winning work is frequently seen on Broadway, Off Broadway, regionally, on film, television, and streaming media. Stephanie, along with her exceptional team, is known for their limitless imagination, creativity, and work on a wide range of projects. SKC is dedicated to continuing to expand and champion diversity, equity, and inclusion in the business. Ms. Klapper is passionate about arts education and working with creative teams to develop new work and expand the scope of established work. Member: Casting Society, Casting Society Cares. For Bob and Florence.

PRIMARY STAGES

Primary Stages is an Off Broadway not-for-profit theater company dedicated to inspiring, supporting, producing, and sharing the art of playwriting. We operate on the strongly held belief that the future of American theater relies on nurturing playwrights and giving them the artistic support needed to create new work. Since our founding in 1984, we have produced more than 135 new plays. Our productions and artists have received critical acclaim, including numerous Tony, Obie, Lortel, Off-Broadway Alliance, AUDELCO, Outer Critics' Circle, Drama League, and Drama Desk awards and nominations. Primary Stages supports playwrights and develops new works through commissions, workshops, readings, and our education and engagement programs: the Dorothy Strelsin New American Writers Group, Marvin and Anne Einhorn School of Performing Arts (ESPA), Teenwrights, Primary Plus Developmental Reading Series, our Free Student Matinee Program, TixTeen, and the Primary Stages Off-Broadway Oral History Project. Through these programs, Primary Stages advocates for our artists, helping them make important—and often transformative—connections within the theater community. For more information on Primary Stages and our various programs, please visit us at primarystages.org

ANDREW LEYNSE

(Artistic Director)

Andrew is currently in his 18th season as Artistic Director of Primary Stages. Andrew is a director and founding member of the Primary Stages Dorothy Strelsin New American Writers Group (now in its 26th year), and teaches for Primary Stages ESPA (Einhorn School of Performing Arts) and The Tepper Semester for Syracuse University. Andrew is a proud Board Member of A.R.T./New York and the Colorado New Play Festival, and is a graduate of Carnegie Mellon's Directing Program.

SHANE D. HUDSON

(Executive Director)

Shane is a graduate of the Yale School of Drama and Emerson College. Shane has served as Director of Development at Elevator Repair Service, Managing Director of the Yale Cabaret, Associate Director of Development at PlayMakers Repertory Company, General Manager/Marketing Director for Blue Man Group, Theater Manager of the Charles Playhouse, and Executive Director of StageSource. He is an adjunct professor at Marymount Manhattan College.

CASEY CHILDS

(Founder)

Founded Primary Stages in 1984 and has directed many productions for the company. He served as the Artistic Program Director for the New Dramatists from 1981-1985 and was the recipient of the Carnegie Mellon Commitment to New Playwrights Award, as well as two Emmy Awards and many nominations for his extensive work in television. He is a past Vice President of the Directors' Guild of America and a past trustee of The National Association of Television Arts and Sciences. Casey has a BFA in acting and an MFA in directing from Carnegie Mellon University.

NEXT UP AT
PRIMARY STAGES



PRIMARY STAGES
in association with TED SNOWDON

On that day in
AMSTERDAM
BY CLARENCE COO

DIRECTED BY
ZI ALIKHAN

JULY 23 - SEPTEMBER 8

59E59 THEATERS

PRIMARY STAGES STAFF

ANDREW LEYNSE Artistic Director
SHANE D. HUDSON Executive Director
CASEY CHILDS Founder

SUE BREGER Government and Education Affairs
DEAN A. CARPENTER General Manager
ERIN DALEY Associate Artistic Director
WILL DUTY Production Manager
DAVID L. GOLDSMITH IT and Rentals Manager
JOSHUA MARTINEZ Marketing and Development Intern
SARAH MATTEUCCI Director of Education and Strategic Planning
CLAUDIA McCOY Assistant General Manager
LUCY McMICHAEL Associate to the Artistic Director
NORA MONAHAN Manager of Individual Giving & Special Events
SALLY PLASS Off-Broadway Oral History Project Director
ERICA RAVEN-SCORZA Director of Development
TED STEPHENS III Graphic Designer, The Numad Group
EMILY TAYLOR-MADRID Artistic Intern
SOFIA VILCHES Development and Communications Assistant

General Press Representative **MATT ROSS PUBLIC RELATIONS:**
MATT ROSS, LIZ LOMBARDI, CLAIRE WOJCIECHOWSKI
Casting Director **STEPHANIE KLAPPER CASTING: STEPHANIE KLAPPER**
Casting Assistant KATE McMORRAN
Casting Assistant DOROTHY STRELSIN
Dorothy Strelsin New American Writers Group KEVIN ARTIGUE,
BENJAMIN BENNE, HILARY BETTIS, ELIZABETH IRWIN, JON KERN,
MATTHEW MINNICINO, LILIANA PADILLA, MADHURI SHEKAR
Company-in-Residence **LATINX PLAYWRIGHTS CIRCLE**
Louise Rockwell Scholars AARON COLEMAN, SHAUN BENNET FAUNTLEROY,
HANNAH HARTMANN, JONATHAN KIM PHILLIPS, CLARO de los REYES
Accountants WITHUMSMITH+BROWN, PC
Legal ANDREA RISOLI, ESQ.
Insurance DeWITT STERN GROUP
Finance Consultant ERICA WHELAN

SPECIAL THANKS

The Staff of 59E59 Theaters, Gordon Dahlquist, Eisa Davis, Lina Khan, Jackson Gay,
Lorenzo Roberts, Tanya Barfield, Anne Washburn, Noah Zachary, Dustin Barbin,
11th Street Workshop, Hayden Production Services, Five Ohm Productions



The actors and stage managers employed in this production
are members of Actors' Equity Association, the union of
professional actors and stage managers in the United States.



The Designers at this Theatre
are Represented by
United Scenic Artists • Local USA 829
of the International Alliance of Theatrical Stage Employees



The Director is a member of the
**STAGE DIRECTORS AND CHOREOGRAPHERS
SOCIETY**, a national theatrical labor union.

ALLIANCE OF RESIDENT THEATRES

Primary Stages is a member of the Alliance of Resident Theatres/New York,
the service organization for NYC's non-profit Off- and Off-Off-Broadway theatres.

PRIMARY STAGES CORPORATE AND FOUNDATION DONORS

Primary Stages gratefully acknowledges the generous support of the following institutions:

\$50,000 AND ABOVE

NYC COVID-19 Response & Impact Fund in The New York Community Trust
The Howard Gilman Foundation ♦
Laurents/Hatchler Foundation
The Lucille Lortel Foundation ♦
The Shubert Foundation
The Harold & Mimi Steinberg Charitable Trust
The Tow Foundation ♦
The Winston Foundation, Inc.

\$25,000-\$49,999

The Cornelia T. Bailey Foundation
The Blanche and Irving Laurie Foundation ♦
The Ambrose Monell Foundation ♦
The Rockwell Foundation
The SHS Foundation
Virginia B. Toulmin Foundation ♦

\$10,000-\$24,999

Con Edison
Gibson Dunn
JTS Fund at the New York Community Trust
The Marc Haas Foundation

\$5,000-\$9,999

Axe-Houghton Foundation
Colgate-Palmolive Urban Education Fund
Dr. Scholl Foundation
Francena T. Harrison Foundation Trust
The Hyde & Watson Foundation
The Marta Heflin Foundation
Richenthal Foundation
The Dorothy Strelsin Foundation*
Synchrony Financial*
The Michael Tuch Foundation

\$1,000-\$4,999

Actors' Equity Foundation
BRS/Gage*
The John Golden Fund
The Herman Goldman Foundation
The Numad Group*
Paradigm Talent Agency*
The Jerome Robbins Foundation
SAG-AFTRA
The Shubert Organization*
The Geraldine Stutz Trust
The Ellen M. Violet & Mary P.R. Thomas Foundation

* Includes gifts made to the 2021 Primary Stages Gala.

♦ Includes gifts made to the 35th Anniversary Campaign for the Future of Primary Stages.

PRIMARY STAGES GOVERNMENT SUPPORT

The Primary Stages Season is supported, in part, with public funds from the National Endowment for the Arts, the New York City Department of Cultural Affairs in partnership with the City Council, and the New York State Council on the Arts with the support of the Office of the Governor and the New York State Legislature.

PRIMARY STAGES BOARD OF DIRECTORS

Janet Reed Ahearn
Shireen A. Barday
Mary Borba
Sue Breger, President Emerita
Casey Childs, Founder
Jamie deRoy
Douglas Durst
Arlene L. Goldman
Adam Gwon
Kate Hamill
Eleanor Holtzman
Shane D. Hudson, Executive Director
Elisabeth Lerner, Secretary
Andrew Leynse, Artistic Director
Gregory M. Macosko, First Vice President
Marla Persky, President
Theresa Rebeck
Robin Rednor-Veghte, Second Vice President
Carol Roaman
Janet B. Rosen
Carol Scibelli
Jeremy Smith
Ted Snowdon
Amit Solomon
Sarah Steinberg, Treasurer
Arline Vogel
Sharon Washington

EMERITUS MEMBERS

Dasha Epstein
Marlene H. Freeman
Douglas M. Green
Jonathan C. Herzog
Ann Blumenthal Jacobs
Karen La Rosa
Jose Mendez
Doug Nevin

IN MEMORIAM

Geoffrey Chinn
Marvin and Anne Einhorn
Michael Fabrikant
Louise Rockwell
Robert Sorensen
Sandra Westin
Elizabeth Wilson

PRIMARY PARTNERS

Primary Partners are generous individual donors who share a love of Primary Stages and our mission. Partners can choose to either take a full tax deduction for their gift or receive exclusive benefits, including personal assistance from the Development Department staff, priority seating in prime locations, invitations to intimate events with today's leading playwrights and actors, and much more. To learn more about becoming a Primary Partner and other giving opportunities, please visit us online at primarystages.org/support.

ANGELS

Anonymous ♦
Casey Childs* ♦
The Durst Family* ♦
Daniel & Rosele Frishwasser
Arlene L. Goldman* ♦
Herrick Theatre Foundation
Eleanor Holtzman & Alexander Holtzman, in memoriam* ♦
Ann Blumenthal Jacobs & Irwin Jacobs, in memoriam* ♦
Gregory Macosko & Sharon A. Zane* ♦
Jose Mendez & Katie Graziano ♦
Marla Persky & Craig Heberton IV* ♦
Carol Roaman* ♦
Janet B. & Marvin Rosen* ♦
Ted Snowdon & Duffy Violante* ♦
Barbara & David Thomas ♦

LEADING PLAYERS

Sue Breger* ♦
Jamie deRoy* ♦
Leslie & Johanna Garfield, in memoriam*
Jeremy T. Smith*
Amit Solomon* ♦
Sarah Steinberg* ♦
Sharon Washington & Charles Schultz*
Arline Vogel & Harry Precourt, in memoriam* ♦

ENSEMBLE

Anonymous
Shireen Barday & Zahreen Ghaznavi*
The Svante Bergstrom Theater Foundation
Anne L. Bernstein, in memoriam* ♦
Mary and Philip Borba*
Diane L. Charlap*
Dasha Epstein*
Jay & Diane Goldsmith*
Russel T. Hamilton
Catherine Fisco Holmes
Andrea & Scott Kimmelman ♦
The Greg and Mari Marchbanks Family Foundation*
Theresa Rebeck & Jess Lynn*
Robin Rednor-Veghte & Robert Kennedy* ♦
Charles & Deborah Royce ♦
Carol Scibelli* ♦
Barton & Jane Shallat ♦
Mary Susnjara*
Bob & Ginny Walthier ♦
Elizabeth Wilson, in memoriam ♦

SPOTLIGHT

Anonymous
Margot Astrachan
Stefany & Simon Bergson*
Eli & Roberta Bluestone
Kathleen & Robert Bojanek ♦
Bertha Goldman, in memoriam ♦
David & Martha Ives ♦
Renee Landegger & Susan Rose*
Karolynn Lestrud
Bill Martin*
Jeffrey Melnick, in memoriam
Jill Mortensen & Kay Phillips* ♦
Hubert Neumann & Debra Purden ♦
Mary Ann & Bruno A. Quinson * ♦
Edward Trach*
Christian & Lonna Yegen

CENTERSTAGE

Kristen Anderson-Lopez & Robert Lopez
Mr. and Mrs. Byron Boston*
Paula Kaminsky Davis*
Cory & Bob Donnalley Charitable Foundation
Elliot Fox & Stephanie Lubroth ♦
Sonia Friedman*
Steven Goldman* ♦
Valerie Gordon-Johnson & Doug Johnson*
Kate Hamill & Jason O'Connell*
Willy Holtzman & Sylvia Shepard* ♦
Paul & Emily Kandel* ♦
Drs. Judith & Sheldon E. Kaufman* ♦
Susan Kennedy*
Riki Kane Larimer*
Allan & Anita Lubarsky ♦
Jeanne & Mike Manto*
Stephen & Carolyn McCandless ♦
John K. Orberg
Lisa Orberg
Laurel J. Richie*
Mickey Rolfe & Bruce Tracey*
Francis H. Williams & Keris Salmon
R.Lee Stump & Abigail Roth

UPSTAGE

Janet Reed Ahearn & Dan Ahearn*
Doreen Cronin ♦
Susan Garruto*
Lynne Halliday & B.H. Barry*
Margaret & Tom Haughey ♦
Jan Nolte & Brad Cooke*
Niki & Tony Scialli
Steven Shane*
Tracey Scott Wilson & Karen Thompson*

DOWNSTAGE

Wendy Barasch*
Constance Beaty
Tom & Linda Dupree
Robert H. and Elizabeth Fergus Foundation
Angelina Fiordellisi & Matt Williams*
Tom Fontana & Sagan Lewis*
Yvette A. Geary*
Shirley & David Ginzberg
Tony Gleason*
Catherine & Charles Gropper*
Barry Grove*
Jeffrey Gural*
Molly Gurney
Edward & Julia Hansen Foundation
Nancy Hollander ♦
Martin Hummel ♦
Whitney Keen & Fred Keen, in memoriam
Henri Koenigsberg
Robert O'Hara*
Daryl Roth
Holly Rothkopf & Stuart Eisenberg
Nancy L. Savitt & Bill Farrell
Alice Scovell
Dan Shaheen*
Robert Skolnick
Susan Stroman*
Kara Unterberg ♦

IN THE WINGS

David Ball
Bernadette Beekman*
Muriel & Carl Binder*
Laurie Braun
Donald Brennan & Lucy McMichael
David L. Calhoun
Jean & Juan Carlos Cappella*
Nancy & Ronald G. Carr
Cicely Cottingham & Victor Davson*
Carol Dallos & Michael Fabrikant, in memoriam
Kenneth & Lori Einhorn*
Aunjane Ellis*
Judith Esterquest
Margery Feldberg
Dr. Leonard Freeman, Marlene Freeman & Joy Freilich*
Catherine Futter
Karen & Ira Gerard
David L. Goldsmith*
Warren Handelman*
Christopher Harris
Henry Harrison
Marin Hinkle
Andrea & David Holbrook
David Horowitz*
Allison Hinds-Pearl & Scott Pearl*
Elizabeth & John Hovey-Jiler*
John Kelso*
Anna Kisselgoff*
Bernard & Carol Kossar Foundation*
Arlene & Richard Kossoff*
Gregory Lehane & Laurie Klatscher
Myla Lerner & Larry Kramer*
Dayna Lucas
Donald Margulies & Lynn Street
Drs. Marlene Marko & Loren Skeist
Theresa Martinac
B.T. McNicholl*
Arthur & Merle Nacht
The Asha & D.V. Nayak Fund
Carol Ochs*
Jeffrey & Liz Passero*
Martha Pichey*
Mark Planner
Marsha Rabiteau*
Hilary Richards*
Christopher Rose*
Leslie & Richard Roth
Deborah & Sheldon Rubin*
Karin Schall*
Patricia Brown Specter
David & Bronwyn Starr*
Sylvia Steiner*
Mary Tyner
Diana Voza & William Garcia*
Cheryl Wiesenfeld
Constance B. Wingate
Jacqueline Woodson*
Mary Young
Lorraine Zegibe*
Ellen & Allen Zerklin

* *Includes gifts made to the 2021 Primary Stages Gala.

♦Includes gifts made to the 35th Anniversary Campaign for the Future of Primary Stages.

The list reflects contributions received as of April 15, 2022. We apologize for any omissions or errors. Due to space limitations, we are unable to list all contributors.

Primary Stages wishes to thank all of our generous donors.

CURATOR'S NOTE

Welcome to Primary Stages first production as our Resident Company, who developed and are now producing this World Premiere by Karen Hartman. I was thrilled to curate this play into the VOLT Festival because it so boldly shows off Karen's incredible range and versatility with its futuristic storytelling style that is very different from any other plays she's written in the past and is a wonderful addition to her already diverse and prolific cannon of work.



Val
VAL DAY
Artistic Director

59E59 THEATERS STAFF

ELYSABETH KLEINHANS President/Founding Artistic Director

VAL DAY Artistic Director

BRIAN BEIRNE Managing Director

ELIZA JOHNSON Finance Associate/Office Manager

CATE PUGLIA Receptionist/Administrative Assistant

MELISSA SHAWCROSS Technical Director

CRISTINA GREENFIELD Marketing Manager

MELINDA GRABER Digital Marketing Associate

ALAN BUTTAR Graphic Designer

MATT ROSS Press Representative

NICOLE CAPATASTO Press Representative

CLAIRE WOJCIECHOWSKI Press Representative

BARBARA IAMS KOREIN Archivist

COLLEEN MORGEN House Manager

CARLOS CONILL Facilities Manager

JOHNATHAN PRICE Facilities Assistant

WALDIN ROJAS Facilities Assistant

CHRISTIAN MILLER Director of Ticketing

LLOYD MULVEY Box Office Manager

CRAIG SCHENKER Box Office Associate

ANDREA ARVANIGIAN Box Office Associate

JORDAN ELMAN Box Office Associate

CHARLI ARNETT Box Office Associate

ANNA BONGARDINO Usher

ANNE RUTTER Usher

BENJI SILLS Usher

CHRISTIAN MIRANDA Usher

ERIC BERKELEY Usher

FLOWER RIOS Usher

ITAI ADAM VAGNER Usher

JAMES SCHULTZ Usher

JOEY PITTORINO Usher

KAYLA GRANT Usher

MICIAH WALLACE Usher

NATALIE LILAVOIS YUSTY Usher

RICHARD RODRIGUEZ Usher

AMBER RIGGLE Theater Technician

JOHN D. IVY Theater Technician

KAT KHELLBLAU Theater Technician

VOLT FESTIVAL 2022

THROUGH JUNE 12

AN UNPRECEDENTED FESTIVAL OF THREE
NEW YORK CITY PREMIERES AUTHORED BY ONE WRITER
PRESENTED IN THREE SPACES, SIMULTANEOUSLY.

VOLT

THE LUCKY STAR
APRIL 26 - JUNE 12

GOLDIE, MAX & MILK
MAY 1 - JUNE 4

LAND ACKNOWLEDGEMENT

59E59 Theaters reside on the traditional homelands of the Leni-Lenape People on the Lenape Island of Mannahatta. We acknowledge the Leni-Lenape as the original people of the land who were forcefully removed during colonization resulting in erased and excluded peoples and culture. We are grateful for the opportunity to work on the land and honor their elders, past and present alongside future generations for their stewardship and continuing relationship with their territory.

This presentation is not a production of the Elysabeth Kleinhans Theatrical Foundation, Inc., which offers its facilities, when available, for productions by not-for-profit theater companies. For further information regarding licensing this theater or other theaters in this Theater Building, contact Brian Beirne, Managing Director. The use of cameras and other recording devices in the Theater is prohibited by law. There is no smoking in this Theater or any part of the Theater Building.